

PREVISION provides advanced near-real-time analytical support for multiple big data streams (coming from online social networks, the open web, the Darknet, Closed-Circuit Television (CCTV) and video surveillance systems, traffic and financial data sources, and many more), subsequently allowing their semantic integration into dynamic and self-learning knowledge graphs that capture the structure, interrelations and trends of terrorist groups and individuals, cybercriminal organisations and organised crime groups, giving rise to enhanced situational awareness in these fields.

**EC Programme:**  
H2020-SU-SEC-2018

**Grant agreement:**  
No. 833115

**Start date:**  
September 2019

**Duration:**  
24 months

**Coordinator:**  
ICCS (GR)

Institute of Communication and Computer Systems  
Dr. Konstantinos Demestichas

**e-mail:**  
cdemest@cn.ntua.gr



This project has received funding from the European Union's Horizon 2020 research and innovation programme under the grant agreement N° 833115.

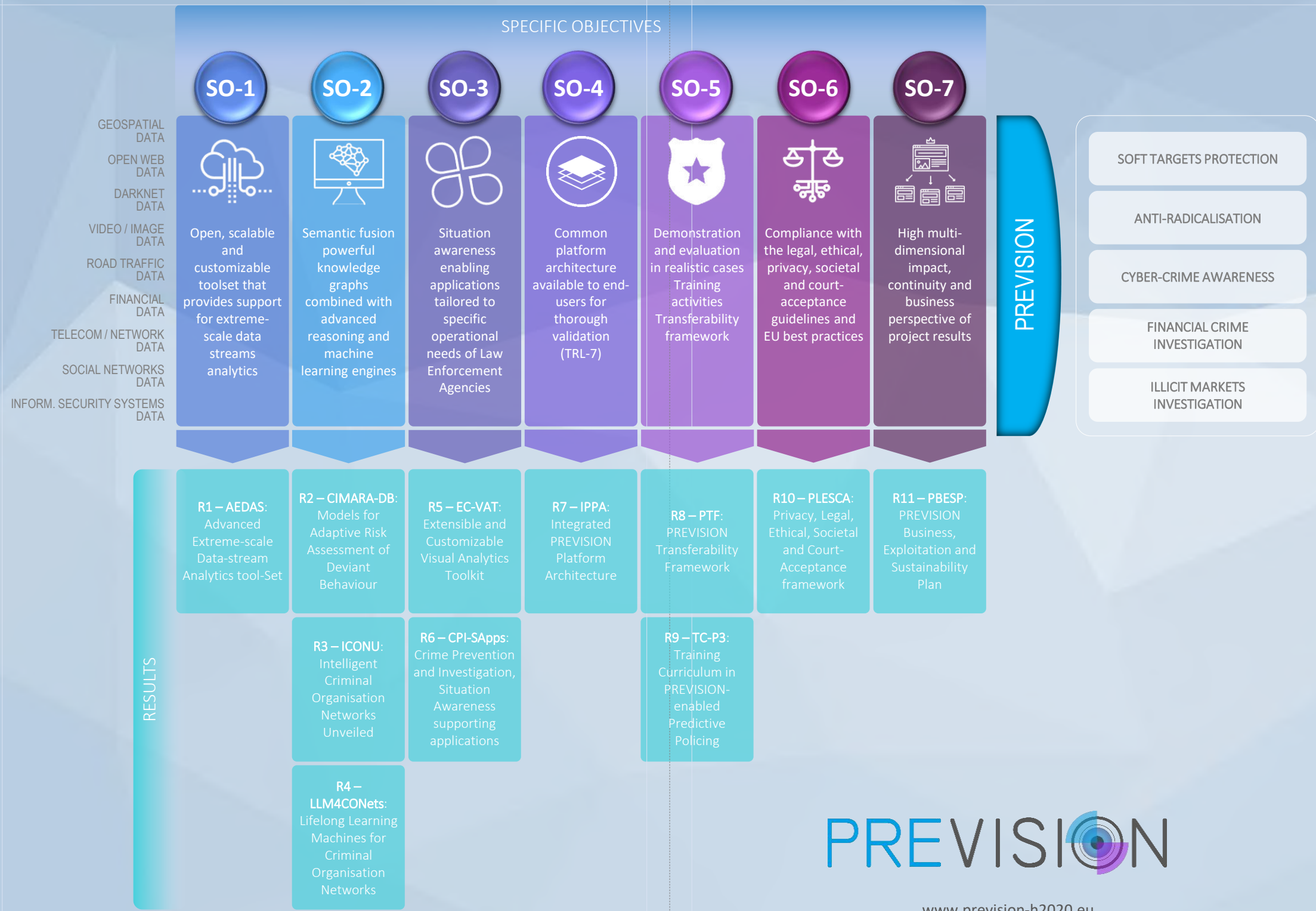


# PREVISION

Prediction and  
Visual Intelligence for  
Security Information



[www.prevision-h2020.eu](http://www.prevision-h2020.eu)



- SOFT TARGETS PROTECTION
- ANTI-RADICALISATION
- CYBER-CRIME AWARENESS
- FINANCIAL CRIME INVESTIGATION
- ILLICIT MARKETS INVESTIGATION

PREVISION has a pan-European engagement and support agenda for LEAs: ten (10) different LEAs and practitioners take part in its consortium, while additional ones (including Europol) have joined its external advisory board. A strong inter-disciplinary dimension, combining technological expertise with sociological, psychological, linguistic and data science models, leads to a common strategic approach for predicting abnormal and deviant behaviour, radicalisation potential, threat risks for soft targets, and cybercrime trends at different timescales. PREVISION conducts demonstrations on five representative and complementary use cases, under real-life operational conditions, in full compliance with fundamental rights and applicable legislation.

PREVISION empowers the analysts and investigators of Law Enforcement Agencies (LEAs) with tools and solutions not commercially available today, to handle and capitalize on the massive heterogeneous data streams that must be processed during complex crime investigations and threat risk assessments.

With criminals being ever more determined to use new and advanced technology for their cause, PREVISION is established as an open and future-proof platform for providing cutting-edge practical support to LEAs in their fight against terrorism, organised crime and cybercrime, which represent three major cross-border security challenges that are often interlinked.

PREVISION provides LEAs with the capabilities of:

- a) Analysing and jointly exploiting multiple massive data streams, coming from online social networks, the open web, the Darknet, CCTV and video surveillance systems, traffic and financial data sources, and many more.
- b) Semantically integrating them into dynamic knowledge graphs that capture the structure, interrelations and trends of terrorist groups and individuals, cybercriminal organisations and OCGs
- c) Predicting abnormal or deviant behaviour and radicalisation risks, based on sound predictive policing methods, underpinned by valid psychological, sociological and linguistic models, in conjunction with historical data patterns
- d) Performing dependable soft target risk assessment and cybercrime trend prediction at different timescales
- e) Becoming continuously more knowledgeable of the operations and activities of criminal organisations, by coupling the semantic technologies with deep and ensemble learning techniques
- f) Maintaining high situation awareness at all times by means of user-centred visual analytics and human-machine interaction techniques.